



THE BASICS



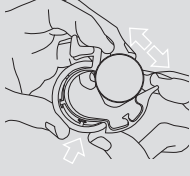
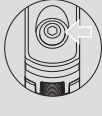
Oi! THIS IS A PRECISION INSTRUMENT

Treat with the same care that you would your bike's other parts: your spokes, your derailleurs, your rear lights, your rear.

If you're in doubt about how to mount, use, or troubleshoot the Oi, visit the Knog website or, of course, your local bike shop.

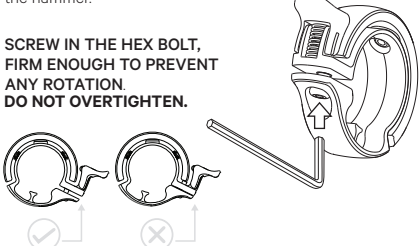
Oi! GET IT ON

- 1 TAKE OUT THE Oi AND REMOVE THE HEX BOLT using the hex key provided.
- 2 If you have the **Large Oi** but a **23.8, 25.4, or 26mm diameter bar** you'll need to put the **appropriate spacer on your bar** to make Oi sit flush. Make sure gap faces straight up. If your bar is 23.8mm, place the rubber tape provided inside the larger spacer.
- 3 MANUALLY OPEN THE MOUTH OF THE MOUNT, AND PUSH OVER THE HANDLEBAR - if you can, fit it around your cables, there's a space just for them.



Oi! GET IT ON

- 4 POSITION ON A CYLINDRICAL PART OF THE HANDLEBAR THAT YOU FIND COMFORTABLE, BUT IS NOT CURVED OR TAPERED. We think close to the handle/grip, so your thumb can comfortably flick the hammer.
- 5 SCREW IN THE HEX BOLT, FIRM ENOUGH TO PREVENT ANY ROTATION. DO NOT OVERTIGHTEN.



Oi! DON'T FORGET

SIZE MATTERS:

SMALL Oi FITS:

22.2mm only

LARGE Oi FITS:

23.8 - 31.8 mm

SHAPE MATTERS:



CYLINDRICAL BAR



NOT SUITABLE FOR AERO

For more information
Pour plus d'information
Für weitere Informationen
Para más información
詳細については

KNOG.COM.AU/OI

IF IN DOUBT ABOUT MOUNTING,
WATCH THIS VIDEO



<http://bit.ly/KnogOiQS>

WARRANTY:

2 years on materials and workmanship.